



Fargo Data Center

Facility Data Sheet

Keep your IT assets protected and connected.

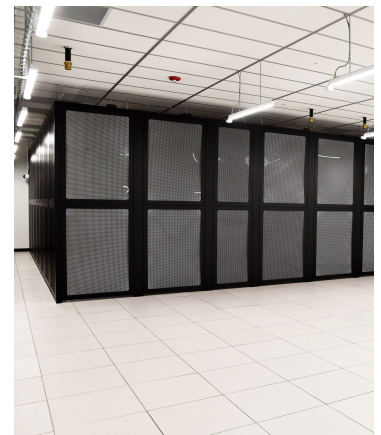
Centrally located in the upper Midwest, our **Tier III, SOC 2-certified data center in Fargo, ND**, has everything your business needs to collocate your critical IT assets. Connect directly to major point of presence (PoP) internet carrier hotels in Minneapolis, Chicago, Omaha, Kansas City and Denver using Midco's extended high-speed, low-latency fiber network.

- Located only **seven** miles from the Hector International Airport.
- Half a mile away from a **major freeway**.
- **Economic hub** for Agriculture, Technology and Healthcare.
- Access to some of the **lowest cost, sustainable energy** in the U.S.
- One of the **fastest growing midsize cities** in the U.S.
- **Wholesale and retail colocation** available.

Custom Infrastructure

Our 16,000-square-foot, purpose-built data center offers more than 7,500 square feet of raised floor.

From a half rack to multiple racks or private suites, customize a solution depending on your rack space and privacy needs. Each standardized rack cabinet comes with metered power distribution units (PDUs), locking doors and optional badge access.



Multi-Location

With four Midco® data centers across North Dakota and South Dakota, choose any as your primary location. Then replicate over diverse networks to another secure Midco data center – ensuring the highest level of data protection and availability.

Certified Expertise

Midco's MEF Carrier Ethernet and Cisco certified technicians have years of experience and training in the data center environment.





Smart Hands Services

Contract our on-site staff for proactive or reactive troubleshooting and hardware configuration assistance (non-software issues).

Fargo Data Center

Facility Data Sheet

Performance and Integration Specs

 Secure Facility <p>Designed to Uptime Tier III specifications, our facility is also flood averse and has EF3-rated shell construction that can withstand up to 150 mph wind speeds. Plus, controlled access and 24/7 monitoring by Midco personnel.</p>	<ul style="list-style-type: none">- Required badge entry with a secondary man trap- Internal and external security cameras- Mechanical galley isolated from the data halls- Loading dock and customer storage staging area- Four diverse fiber points of entry
 Redundant Power <p>Our system has a redundant uninterruptible power supply (UPS) and dual generators with automatic power transfer. 2N full backup power can run for 48 hours – or longer with fuel contracts.</p>	<ul style="list-style-type: none">- Isolated A and B electrical rooms- Dual 1.75 MW generators with automatic power transfer- Redundant uninterruptible power supply (UPS)- N+1 redundancy on HVAC units
 Controlled Cooling <p>Prolong the life of your equipment with energy-efficient, humidity-controlled heating and cooling.</p>	<ul style="list-style-type: none">- N+1 HVAC design in the data halls- High-capacity computer room air conditioning (CRAC)- Efficient cooling (economizer technology) during the cold winter months
 Fire Suppression and Detection <p>In case of a fire emergency, know you're protected with specialized suppression and detection.</p>	<ul style="list-style-type: none">- VESDA detection in the data halls and electrical rooms- Building sprinklers: a wet system in the common areas and dry double interlock system in the data halls and electrical rooms- Clean agent fire suppression system in the data halls

Extensive Network

- ✓ 15K+ miles of Midco-owned fiber optic network
- ✓ Monitored 24/7 by the Midco Network Operations Center
- ✓ Private and public network access
- ✓ Proactive Layer 3 and 4 DDoS protection
- ✓ MEF 3.0 carrier ethernet certified
- ✓ Carrier neutral to allow for redundant carriers

